

ELK BIOTECHNOLOGY



ELK Biotechnology

FEATURED ELISA KITS

Easy Step • Microsample • High Sensitivity • Monkey Species

MAKE RESEARCH EASIER

A Global Reagent Supplier Integrating R&D, Production, and Marketing!

ELK Biotechnology® ELISA Kit



Precoated
ELISA Kits



Easy Step
ELISA Kits



MicroSample
ELISA Kits



High Sensitivity
ELISA Kits



Monkey Serum
ELISA Kits

ELISA Kit: Key Advantages

High sensitivity
pg level

High specificity
< 5%

Excellent recovery rate
85%-115%



9000+
ELISA Kits

4000+
Citations

Lead time
3 Business Days

Research Area



Cell biology



Signal transduction



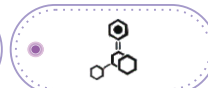
Developmental biology



Microbiology



Epigenetics



Immunology



Cardiovascular



Metabolism



Stem cells



Molecular biology



Neurology



Cancer & Oncology

ELK Biotechnology® ELISA Kits Citation

Citations: **4000+** Total Impact Factor: **20000+**

IF	Journal	DOI	Reactivity	Product name
52.7	Signal Transduction and Targeted Therapy	https://doi.org/10.1038/s41392-025-02518-y	Human	IL10 . ARG1 TGFb1 . VEGFA
52.7	Signal Transduction and Targeted Therapy	https://doi.org/10.1038/s41392-025-02186-y	Mouse	ALT . AST
48.8	Cancer Cell	https://doi.org/10.1016/j.ccell.2025.02.024	Rat	HADHb
44.8	SCIENCE	https://doi.org/10.1126/science.adm9805	Human General	Malonyl CoA DHA
33.1	Nature Biotechnology	https://doi.org/10.1038/s41587-025-02610-2	Mouse	IX (F9)



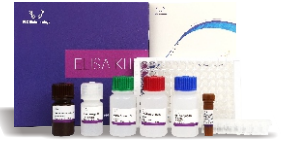
CiteAb
Data Accelerating Science

WINNER

ELISA Kit Supplier to Watch
ELK Biotechnology

Easy Step ELISA Kit

- ✔ **More Capacity:** Large 112T/64T formats. Test up to 96 samples per kit.
- ✔ **Faster Workflow:** Simple protocol, no standard dilution. Results in 1.5 hours.
- ✔ **Greater Reliability:** Multi-stage QC ensures consistent, premium quality.
- ✔ **Save Time & Effort:** Clear protocols cut hands-on time by 50%.



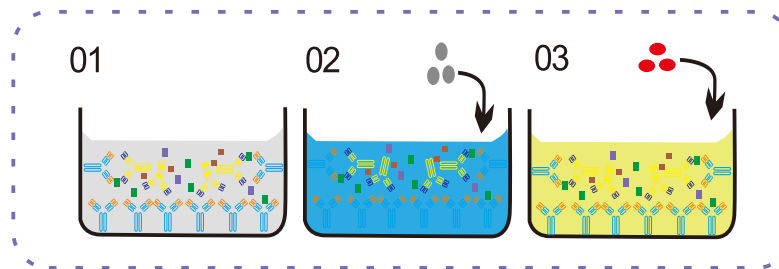
One step method	VS	Traditional three-step method
Operating time: 1.5h		Operating time: 3.5h
Standard dilution: Not required		Standard dilution: Required
Number of test samples: Up to 96 (standard strips are provided separately)		Number of detection samples: Up to 88
Sampling volume: 50µL		Sampling volume: 100µL
Size 112T		Size: 96T
Globally Originality		
Storage temperature and shelf life 4°C (6 months) -20°C (12 month)		

Operating Steps

- ✔ **One-step assay with only 1.5 hours hands-on time**

After the kit is equilibrated at room temperature, add 50µL Standard/Sample Diluent Buffer to each Standard well, and add 50 µL sample to the sample well, Immediately add 50 µL 1× HRP Conjugate Antibody Working Solution to each well, Incubate at 37°C on Microplate oscillator for 60 min.

Discard the liquid in the plate, add 200 µL 1× Wash Buffer to each well, and wash the plate 5 times. After pat it dry against clean absorbent paper, add 90µL TMB Substrate Solution to each well, incubate at 37°C for 20 minutes in the dark.



Add 50 µL Stop Solution to each well, shake plate on a plate shaker for 1 minute to mix. Record the OD at 450 nm immediately, calculate the results.

Cat.No.	Targets	Cat.No.	Targets
ELK001ES	EasyStep Human IL6(Interleukin 6) ELISA Kit	ELK018ES	EasyStep Mouse FE(Ferritin) ELISA Kit
ELK002ES	EasyStep Human CEA(Carcinoembryonic Antigen) ELISA Kit	ELK019ES	EasyStep Human MPO(Myeloperoxidase) ELISA Kit
ELK003ES	EasyStep Human PCT(Procalcitonin) ELISA Kit	ELK020ES	EasyStep Human E2(Estradiol) ELISA Kit
ELK004ES	EasyStep Human AMH(Anti-Mullerian Hormone) ELISA Kit	ELK021ES	EasyStep Mouse E2(Estradiol) ELISA Kit
ELK005ES	EasyStep Human Cys-C(CystatinC) ELISA Kit	ELK022ES	EasyStep Rat E2(Estradiol) ELISA Kit
ELK006ES	EasyStep Human GH(Growth Hormone) ELISA Kit	ELK023ES	EasyStep Human ANXA1(Annexin A1) ELISA Kit
ELK007ES	EasyStep Human BNP(Brain Natriuretic Peptide) ELISA Kit	ELK024ES	EasyStep Human EFNA1(Ephrin A1) ELISA Kit
ELK008ES	EasyStep Human sT2(Soluble Suppression Of Tumorigenicity 2) ELISA Kit	ELK025ES	EasyStep Human VASP(Vasodilator Stimulated Phosphoprotein) ELISA Kit
ELK009ES	EasyStep Human OC(Osteocalcin) ELISA Kit	ELK026ES	EasyStep Human CEACAM1(Carcinoembryonic Antigen Related Cell Adhesion Molecule 1) ELISA Kit
ELK010ES	EasyStep Human PGI1(Pepsinogen II) ELISA Kit	ELK027ES	EasyStep Human VEGF165(Vascular Endothelial Growth Factor 165) ELISA Kit
ELK011ES	EasyStep Human PSA(Prostate Specific Antigen) ELISA Kit	ELK028ES	EasyStep Human ADP(Adiponectin) ELISA Kit
ELK012ES	EasyStep Human CRP(C Reactive Protein) ELISA Kit	ELK029ES	EasyStep Mouse ADP(Adiponectin) ELISA Kit
ELK013ES	EasyStep Human PRL(Prolactin) ELISA Kit	ELK030ES	EasyStep Rat ADP(Adiponectin) ELISA Kit
ELK014ES	EasyStep Human HE4(Epididymal protein 4) ELISA Kit	ELK031ES	EasyStep Human FSH(Follicle Stimulating Hormone) ELISA Kit
ELK015ES	EasyStep Human HBP(Heparin-Binding Protein) ELISA Kit	ELK032ES	EasyStep Human Mlg1(Monokine Induced By Interferon Gamma) ELISA Kit
ELK016ES	EasyStep Human CP(C-Peptide) ELISA Kit	ELK033ES	EasyStep Human VEGFA(Vascular Endothelial Growth Factor A) ELISA Kit
ELK017ES	EasyStep Human FE(Ferritin) ELISA Kit	ELK034ES	EasyStep Human OPG(Osteoprotegerin) ELISA Kit



MicroSample ELISA Kit

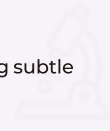
Saves Sample

Uses only **25 µL** vs. 100 µL (75% less), ideal for precious /limited samples.



Highly Sensitive

Detects targets at **pg/mL** levels, revealing subtle biological changes.



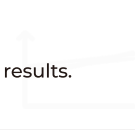
Highly Specific

Cross-reactivity **<5%**, minimizes background interference.



Precise & Reproducible

CV <8.5% ensures reliable, consistent results.



Research area of ELK Microsample ELISA kits

ELK Biotechnology Microsample ELISA Kits feature an extensive product line, successfully validated for over **800** hot-selling targets across human, mouse, and rat species, fully empowering your cross-disciplinary research.



2000+ Kit  **25µL only**



✓ Immunology and Inflammation Research

TNF- α , IL-6, IL-12, CRP, chemokines, IFN- γ , and other inflammatory mediators.

✓ Cancer and Tumor

EGFR, CD19, CEA, PSA, and various growth factors, facilitating research in tumor mechanisms and diagnostics.

✓ Metabolic Endocrinology

GLP1R, PPAR α /8, LEPR, PTH - enabling in-depth research on diabetes, obesity, and other metabolic diseases.

✓ Cardiovascular Research

Cardiac Troponin (cTnI/T), BNP, PCSK9, NLRP3 - Key tools for precision diagnosis of cardiovascular diseases.

✓ Stem Cell and Cell Therapy:

CD34, CD19, GPC3 - delivering critical data for regenerative medicine research.



High Sensitivity ELISA Kit

ELK Launches dozens of High-Sensitivity ELISA Kits

ELK introduces dozens of high-sensitivity ELISA kits focused on cytokines, providing optimal solutions for low-concentration detection in cell supernatants.



Ultra-Low Detection

- Measures trace amounts with sensitivity down to pg/mL (some kits to fg/mL), offering 2-10x higher sensitivity than conventional ELISA.



High Specificity

- Employs a sandwich ELISA format with high-affinity antibodies, minimizing false positives and ensuring reliable performance in complex samples like serum and plasma.



Strong Signal Amplification

- Uses HRP enzyme with biotin-avidin amplification and optimized substrates for a high signal-to-noise ratio and low background.



Excellent Reproducibility

- Features intra-/inter-assay CV <8%, recovery rates of 80–120%, and consistent lot-to-lot performance.



Easy & High-Throughput

- Ready-to-use, pre-coated 96-well plates are automation-friendly. Catalog numbers align with traditional kits for easy ordering.

Cat.No.	Targets	Cat.No.	Targets
ELK9996HS	High Sensitivity Rat CRP(C Reactive Protein) ELISA Kit	ELK1178HS	High Sensitivity Human PLGF(Placenta Growth Factor) ELISA Kit
ELK1036HS	High Sensitivity Human IFNg(Interferon Gamma) ELISA Kit	ELK9339HS	High Sensitivity Human sFLT(Soluble Fms-Like Tyrosine Kinase Receptor 1) ELISA Kit
ELK1156HS	High Sensitivity Human IL6(Interleukin 6) ELISA Kit	ELK1346HS	High Sensitivity Human TNFRSF1B(Tumor Necrosis Factor Receptor Superfamily, Member 1B) ELISA Kit
ELK1024HS	High Sensitivity Human GROa/CXCL1(Growth Regulated Oncogene Alpha) ELISA Kit	ELK2563HS	High Sensitivity Rat I-PTH(IntactParathormone) ELISA Kit
ELK2314HS	High Sensitivity Human TNFb(Tumor Necrosis Factor Beta) ELISA Kit	ELK2564HS	High Sensitivity Mouse I-PTH(IntactParathormone) ELISA Kit
ELK1152HS	High Sensitivity Human IL4(Interleukin 4) ELISA Kit	ELK2320HS	High Sensitivity Rat VEGFA(Vascular Endothelial Growth Factor A) ELISA Kit
ELK1336HS	High Sensitivity Mouse Mig(Monokine Induced By Interferon Gamma) ELISA Kit	ELK1293HS	High Sensitivity Mouse VEGFA(Vascular Endothelial Growth Factor A) ELISA Kit
ELK8871HS	High Sensitivity Human CP(C-Peptide) ELISA Kit	ELK5056HS	High Sensitivity Mouse MCP1(Monocyte Chemotactic Protein 1) ELISA Kit
ELK10135HS	High Sensitivity Human CHI3L1(Chitinase-3-Like Protein 1) ELISA Kit	ELK1153HS	High Sensitivity Mouse IL4(Interleukin 4) ELISA Kit
ELK10174HS	High Sensitivity Human ANG(Angiogenin) ELISA Kit	ELK1243HS	High Sensitivity Rat MIP1a(Macrophage Inflammatory Protein 1 Alpha) ELISA Kit
ELK1149HS	High Sensitivity Human IL2(Interleukin 2) ELISA Kit	ELK1116HS	High Sensitivity Mouse MIP1a(Macrophage Inflammatory Protein 1 Alpha) ELISA Kit
ELK1258HS	High Sensitivity Human FGF2(Fibroblast Growth Factor 2, Basic) ELISA Kit	ELK1115HS	High Sensitivity Human MIP1a(Macrophage Inflammatory Protein 1 Alpha) ELISA Kit
ELK10240HS	High Sensitivity Human EGF(Epidermal Growth Factor) ELISA Kit	ELK1383HS	High Sensitivity Mouse GROb(Growth Regulated Oncogene Beta) ELISA Kit



Monkey Serum ELISA Kit

Introduction

Non-human primates (NHPs), primarily cynomolgus and rhesus monkeys, represent the critical and irreplaceable bridge from preclinical research to human clinical trials. Their essential role stems from four key attributes: physiological homology, immunogenicity relevance, safety assessment reliability, and superior translational value. As a result, NHPs are a core animal model mandated by regulatory authorities worldwide, including the FDA and NMPA, for evaluating drug efficacy and safety before human testing.



Why Primate Models Are Essential

- High Biological Fidelity**
Close genetic & physiological similarity enables predictive assessment of drug efficacy and immunogenicity.
- Critical Safety Insights**
Detect cardiovascular, neurological, and immunological toxicities often missed in rodents—key to de-risking clinical trials.
- Human-Like Pharmacokinetics**
Metabolism and excretion closely mimic humans, informing clinical dosing.
- Regulatory Required**
Mandatory for most biologics and novel-target drugs before first-in-human trials (per FDA, EMA, NMPA).



Glucose and Lipid Metabolism



Neurological Diseases / Disorders



Growth Factor



IL



Inflammation and Infection



Chemokine



Tumor-Associated



Hepatic and Renal Function

Cat.No.	Targets	Cat.No.	Targets
ELK11565	Simian APOC2(Apolipoprotein C2) ELISA Kit	ELK11462	Simian Lpa(Lipoprotein, a) ELISA Kit
ELK11475	Simian APOE(Apolipoprotein E) ELISA Kit	ELK10866	Simian INS(Insulin) ELISA Kit
ELK11461	Simian APOB(Apolipoprotein B) ELISA Kit	ELK11545	Simian IGFBP3(Insulin Like Growth Factor Binding Protein 3) ELISA Kit
ELK11460	Simian APOB100(Apolipoprotein B100) ELISA Kit	ELK11515	Simian IGF1(Insulin Like Growth Factor 1) ELISA Kit
ELK11337	Simian APOC3(Apolipoprotein C3) ELISA Kit	ELK0919	Simian CP(C-Peptide) ELISA Kit
ELK11187	Simian APOA1(Apolipoprotein A1) ELISA Kit	ELK11492	Simian PCT(Procalcitonin) ELISA Kit
ELK11619	Simian NCAM(Neural Cell Adhesion Molecule) ELISA Kit	ELK11493	Simian CALP(Calprotectin) ELISA Kit
ELK11575	Simian GFAP(Glial Fibrillary Acidic Protein) ELISA Kit	ELK11467	Simian HBP(Heparin-Binding Protein) ELISA Kit
ELK11555	Simian NSE(Enolase, Neuron Specific) ELISA Kit	ELK11576	Simian PDGFBB(Platelet Derived Growth Factor BB) ELISA Kit
ELK7900	Simian NGF(Nerve Growth Factor) ELISA Kit	ELK11523	Simian VEGFA(Vascular Endothelial Growth Factor A) ELISA Kit
ELK11477	Simian BDNF(Brain Derived Neurotrophic Factor) ELISA Kit	ELK11515	Simian IGF1(Insulin Like Growth Factor 1) ELISA Kit

Why choose ELK ?



Full range of products



**Fast delivery
Perfect supply chain**



Strict quality control



**High stability
specificity**



**Reliable technical
service Better
after-sale service**



Cost-effective

ELK Biotechnology CO.,Ltd.

10410 Corporate Dr, STE12 Sugar Land, TX 77478, USA

www.elkbiotech.com +86-027-59760950 elkbio@elkbiotech.com



ELK Biotechnology